



Twenty-second International Conference on New Directions in the Humanities

Traveling Concepts: The Transfer and Translation of Ideas in the Humanities | 26-28 June 2024 | Sapienza University of Rome, Rome, Italy + Online

[SUBMIT](#) [REGISTER](#) [CGSCHOLAR EVENT MICROSITE](#) [IMPORTANT DATES](#)

Themes and Special Focus

Founded in 2003, the New Directions in the Humanities Research Network is brought together by a common interest in established traditions in the humanities while at the same time developing innovative practices and setting a renewed agenda for their future. We seek to build an epistemic community where we can make linkages across disciplinary, geographic, and cultural boundaries.

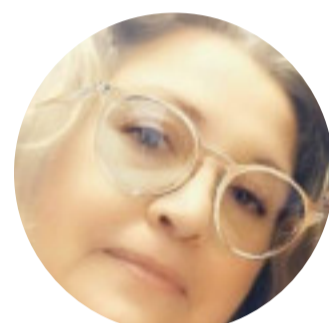
The Twenty-second International Conference on New Directions in the Humanities calls for research addressing the following annual themes and special focus:

2024 Special Focus—Traveling Concepts: The Transfer and Translation of Ideas in the Humanities

- THEME 1: CRITICAL CULTURAL STUDIES
- THEME 2: COMMUNICATION AND LINGUISTICS STUDIES
- THEME 3: LITERARY HUMANITIES
- THEME 4: CIVIC, POLITICAL, AND COMMUNITY STUDIES
- THEME 5: PAST AND PRESENT IN THE HUMANISTIC EDUCATION

[SPECIAL FOCUS](#) [SCOPE & CONCERNS](#) [THEMES](#) [PROGRAM](#)

Research Network Chair



Dr. Asun López-Varela

Universidad Complutense de Madrid, Madrid, Spain

Local Conference Chair



Dr. Emilia Di Rocco

Sapienza Università di Roma, Italy

2024 Plenary Speakers

The Twenty-second International Conference on New Directions in the Humanities will feature plenary sessions by some of the world's leading thinkers and innovators in the field.



Massimo Fusillo

Professor of Literary Theory and Comparative Literature, University of L'Aquila; President of the Italian Association of Literary Theory and Comparative Literature, Italy

"Melodrama as Excess of Passions: Negative Empathy, Catharsis, Sublime"



Mieke Bal

Professor in Literary Theory, University of Amsterdam, The Netherlands

"It's About Time!"



Ernst van Alphen

Professor of Literary Studies and Cultural Analysis, Leiden University Centre for the Arts in Society, The Netherlands

"The Temporality of Cultural Analysis"



Svetlana Maliavina

Profesora, Universidad Complutense de Madrid, España

"Viajes reales e imaginarios: España y Rusia, una fascinación a distancia" (In Spanish)

Conference Partners



Sapienza University of Rome

Rome, Italy



European Society of Comparative Literature

Stay Up To Date

To get regular updates sign up for our [newsletter](#), like us on [Facebook](#), follow us on [Twitter](#), or join the [Scholar Community](#).

Monthly Newsletter

Subscribe to receive monthly updates by email about conferences, publications, and news from the field.

Your email...



Stay Connected



Get Support

Have a question? We're here to help. Visit the help center to get started.

[SUPPORT CENTER](#)

Common Ground Research Networks

University of Illinois Research Park
60 Hazelwood Drive
Champaign, IL 61820 USA

Phone: +1 217 328-0405
Fax: +1 217 328-0455
Email: support@cgnetworks.org

[Terms and Conditions](#)

2024 Conference

- Special Focus
- Call for Papers
- Event Microsite Guide
- Program
- Special Events
- Registration
- Format
- Emerging Scholar Awards
- Hotel & Accommodations
- Venue
- Past Editions

2025 Conference

- Call for Papers
- Event Microsite Guide
- Program
- Special Events
- Registration
- Format
- Emerging Scholar Awards
- Hotel & Accommodations
- Venue
- Past Editions

Journals

- Call for Articles
- Editorial Board
- Awards
- Publishing Ethics Guidelines
- Rights & Permissions
- Access
- Advisory Board
- Editing Services

Books

- Become an Author
- Call for Reviewers
- Call for Series Curators
- Editing Services
- Open Access
- Managing Editor

Community

- From the Field
- Imagining Futures

About

- Become a Member
- Themes
- Scope & Concerns
- Advisory Board
- History
- Our Partners
- Common Ground Research Networks

Support

Contact | Redirecting You to the Knowledge Base...

- Aging & Social Change Research Network
- Climate Change: Impacts & Responses Research Network
- Design Principles & Practices Research Network
- Food Studies Research Network
- Law Enforcement Training and Education
- Interdisciplinary Social Sciences Research Network
- On Sustainability Research Network
- Sport & Society Research Network
- The Arts in Society Research Network
- Communication & Media Studies Research Network
- Diversity in Organizations, Communities & Nations Research Network
- Global Studies Research Network
- The Image Research Network
- The Learner Research Network
- Organization Studies Research Network
- Technology, Knowledge & Society Research Network
- Information, Medium & Society – The Publishing Studies Research Network
- Constructed Environment Research Network
- e-Learning & Innovative Pedagogies Research Network
- Health, Wellness & Society Research Network
- The Inclusive Museum Research Network
- New Directions in the Humanities Research Network
- Religion in Society Research Network
- Tourism and Leisure Studies Research Network